



FIVE DIMENSIONS

Five Dimensions General Contracting & Maintenance LLC

P.O. Box : 39645 , Abu Dhabi UAE.

Tel / Fax: +971 2 6325622

Mobile : +971 50 3159006

Email : info@fivedimensions.ae /
fivedimensions@hotmail.com



A comprehensive line of horizontal and vertical waterproofing membrane systems, waterstops, drainage composites and accessories.



ABOUT THE COMPANY

We understand that one of the major challenges for designers, engineers and construction companies alike is to protect buildings and all under ground structures from the damaging effects of water and weather. Our philosophy recognizes that while waterproofing protection can be a relatively minor component of overall construction costs, it is a vital ingredient to successful project completion and determines the building's longevity. Moreover, we understand that one of the critical ingredients of any system is the installation and that our clients are looking for systems that have been certified and tested under all situations.

SYSTEMS YOU DEMAND, EXPERIENCE YOU TRUST.

Our highly qualified staff are keen to work with clients through out all stages of the project, from design to system installation. The installation process is carefully implemented by our technical staff and on site quality controllers, in addition our waterproofing systems staff are available for final sign-off, to ensure that the system has been laid strictly in accordance with the specification.

We also work extensively with the main contractors on site, to ensure that our installation standards have been met. We have a comprehensive on site quality management system for each and every application we install. This ensures the highest quality at all stages of the project.



OUR VISION

"To be recognized as being superior in protection"

Protecting our customer's buildings & all under ground structures from the damaging effects of water is our primary focus. Our aim is to provide competitive, value for money solutions without cutting corners, or compromising the technical integrity of the system. We offer a complete range of waterproofing membrane systems, backed up by professional staff, applicators, service and sensible warranties. We can assist you with system specifications and product selection to ensure the most durable solution for your application.



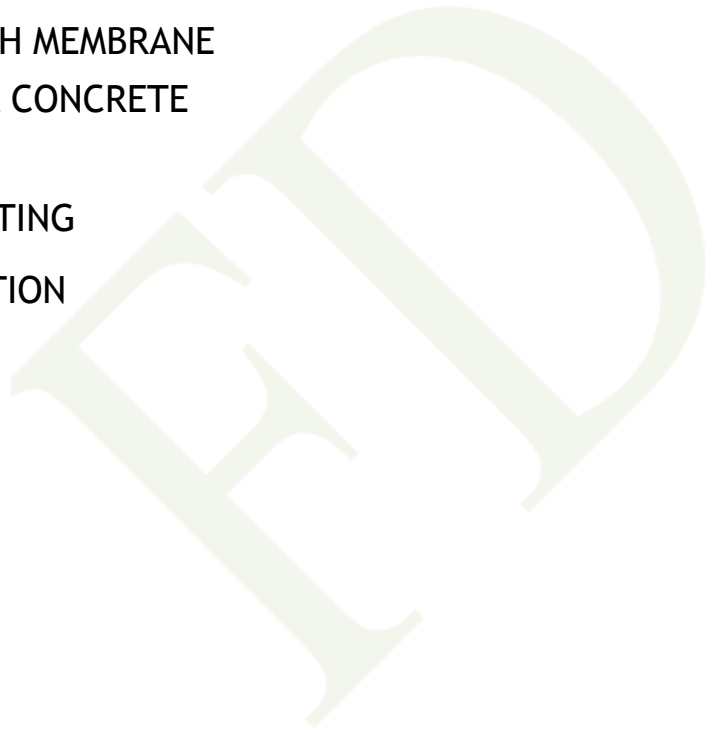
OUR SERVICES

1. WATER PROOFING

- 1. FIVE CARE ROOF SYSTEM**
- 2. TORCH MEMBRANE**
- 3. FOAM CONCRETE**

2. EPOXY COATING

3. CONSTRUCTION





WATER PROOFING

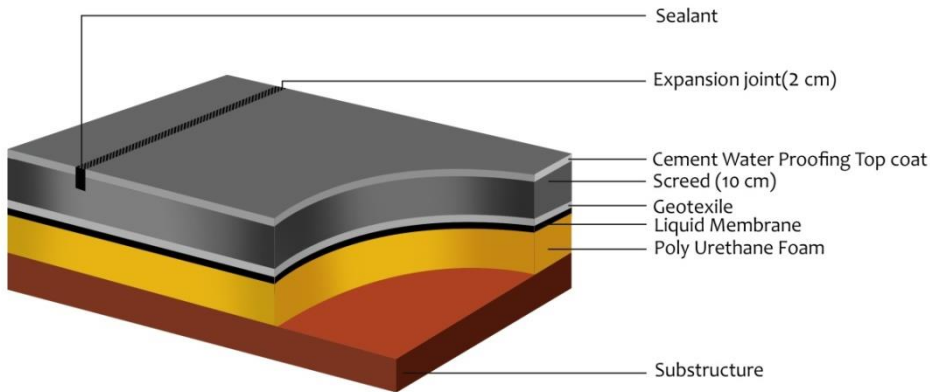
Structural And Foundation Waterproofing:

Waterproofing of structural members and foundations is an essential factor of any structure. We offer solutions for all waterproofing conditions and designs, using our expertise and unique material installed under strict specifications. May it be post-applied or pre-applied, above or below grade waterproofing. Pre-applied waterproofing is applied before the foundation is poured. These membranes may be applied in wet conditions till a certain depth, they promote soil stabilization and waterproof the foundations . Post-applied waterproofing membranes are applied after the installation of the concrete walls. Post-applied below grade waterproofing needs to be well-adhered and sealed to the structure, providing flexibility to accommodate structural movements. Above grade waterproofing installation can be a strenuous, task due to curves, corners, complex shapes and geometries, requiring a reliable waterproofing membrane. Five dimensions provides a variety self adhesive and torch adhesive membrane technologies for all waterproofing applications.



WATER PROOFING

FIVE CARE ROOF SYSTEM



Top 10 Reasons To Use Five care Foam Insulation

1) Five care spray foam insulation pays for itself.

Saving energy saves money. Studies show SPF can pay dividends within 4 years.

2) Five care spray foam insulation is not affected by heat, cold or moisture.

Unlike fiberglass or cellulose, SPF will not lose R-value due to moisture.

3) Five care spray foam is waterproof.

Since the moisture cannot penetrate closed cell spray polyurethane foam, mold cannot grow.

4) Five care spray foam insulation is an environmentally friendly material.

Although the application process can be hazardous without proper handling, the cured or final product omits no toxic chemicals. In fact, SPF is the leading insulation for eliminating airborne contaminants, allergens, and toxins.

5) Five care spray foam insulation adds structural strength.

The rigid nature of the product can add up to 300% shear and racking strength.

6) Five care spray foam insulation improves indoor air quality.

By creating an air-tight seal external pollutants and particles are eliminated. Spray foam also does not contain any fibers, loose particles or toxic vapors that can become airborne.

7) Five care spray foam will decrease your utility bills.

The airtight seal created allows the heating and air-conditioning unit to work more efficiently keeping utility bills down. The US Department of Energy (DOE) studies show that 40% of energy is lost due to air infiltration alone.



8) Five care spray foam insulation eliminates air infiltration.

It creates a perfect seal with no gaps as it is applied as a liquid that hardens as it dries. Spray foam fills cracks and crevasses.

9) Five care spray foam insulation will help deaden noise.

The air-tight seal helps reduce noise and the insulation factor will reduce noise of internal mechanical systems.

10) Five care spray foam insulation will increase the property value.

Buildings with spray foam insulation have more resale value because they are more energy efficient, fire resistant and environmentally friendly.

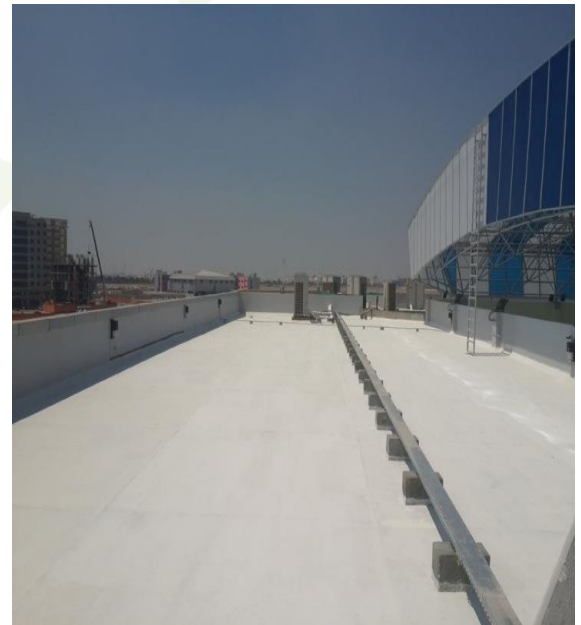
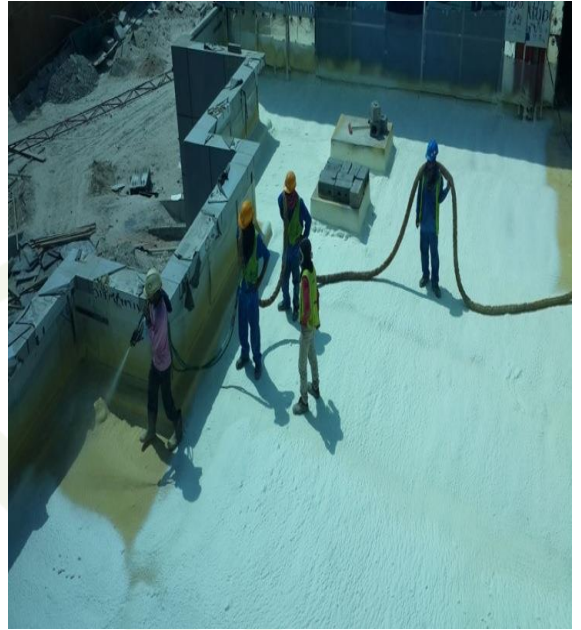
FIVE CARE ROOFING SYSTEM

- 1) Main contractor prepare the slab surface.
- 2) After the main contractor has completed the preparation of Work.
We should check and accept the preparation work in writing.
- 3) Supply & spray polyurethane foam as site requirement (45-50 kg/m³ density)
Over the entire roof area including the up stands to a height of max 200mm.
- 4) Supply and brush rubberized coating over the entire polyurethane foam area
Allow drying for minimum 24 hours.
- 5) Flood water test for a minimum period of 24 hours.
- 6) Supply Apply one layer 120 g Geotextile.
- 7) Supply Apply ridges and screed to the slope of 10 cm average thickness
- 8) Prepare angle fillet all around parapet skirting area and up stands using sand
Cement mortar. Skirting area should be measured in sq.mtr, 20cm average height.
- 9) Supply Apply sealant along with backing rod to all expansion joints in screed.
- 10) Supply & brush apply two part acrylic modified elastomeric Cementitious coating.
- 11) Final inspection and life time guarantee of 25 years.



FIVE DIMENSIONS

FIVE CARE ROOF SYSTEM





FIVE DIMENSIONS

FIVE CARE ROOF SYSTEM





TORCH MEMBRANE

Monolithic, seamless waterproofing membrane for long-term protection of structures and buildings. Proven performance on Thousands of square Meter throughout UAE.

BASEMENT TANKING SYSTEMS

These are by far the most important waterproofing applications in the Emirates due to the existence of a high ground water level.

Five Dimensions offers turn-key solutions for all types of Basement Tanking Systems starting from design to execution, whether it is single, double or triple basement or whether it is raft or deep foundation.

WATERPROOFING SYSTEMS

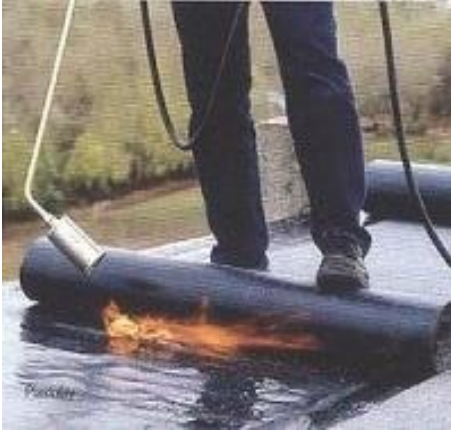
Waterproofing systems for construction are becoming increasingly important for the protection and life span of structure design.

Five Dimensions executes and supplies materials for the protection of various parts of structures such as: substructure concrete, wet areas, building facades, damp areas, flower boxes, basement and tanking systems.



FIVE DIMENSIONS

TORCH MEMBRANE





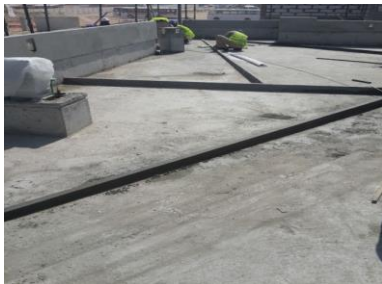
FOAM CONCRETE

Foamed concrete Applications and benefits:

A low density mix is chosen and the resulting air content gives the material excellent thermal insulation properties. The low density also has the advantage that it does not significantly add to the overall weight of the roof.

Roofing insulation is probably the most widespread application of foamed concrete. Foamed concrete has two benefits when it is used for roofing. The first benefit is that it provides a high degree of thermal insulation. The second benefit is that it can be used to lay a flat roof to falls, i.e. to provide a slope for drainage. In countries where roofs are flat and where roof surfaces are used as part of everyday life, foamed concrete is strong enough to support foot or even vehicular traffic on the roof. Foamed concrete is also much lighter than slopes made from mortar screeds. This means that a roof with a slope made of foamed concrete imposes a lower loading on the structure of the building.

Its inherent fire resistance has also been exploited in a wide range of uses, such as tilt-up firewalls, vaults etc.





EPOXY COATING

Epoxy floor coatings are hard wearing and durable solutions for both commercial and industrial flooring. These floor coatings can be applied over concrete floors to provide a high performance, attractive surface. At five dimensions , our epoxy flooring experts have experience installing epoxy floor coatings for a variety of commercial and industrial buildings .

Epoxy Floor Coating Advantages

Using an epoxy floor coating over your concrete floors will create a high gloss, hard wearing, and durable surface. These floor coatings offer a number of benefits and advantages from the initial installation stages to the long-term maintenance steps. For example, epoxy floor coatings are quick to install and are durable and easy to clean. Because of the many advantages that epoxy floor paint offers, this is an ideal flooring solution for many types of situations.

The following are some of the main advantages associated with choosing an epoxy floor coating for your commercial or industrial building. Your new epoxy floor coating will:

Our epoxy floor coating products turn concrete floors into a seamless and durable, high performance surface that will last for years to come.



FIVE DIMENSIONS

EPOXY COATING





FIVE DIMENSIONS

CONSTRUCTION

Five Dimensions was founded in 2005 specializing in commercial, industrial and residential projects with a particularly strong performance in concrete tilt-up and sustainable developments. Our expertise is extensive and spans a wide range from pre-construction services to complete turn-key construction projects.

Our successful construction approach can be attributed to our highly talented and educationally qualified work force, aggressive subcontractor administration, accurate cost control, low overheads and sustainable practices.





OUR PROJECTS



**Al Falah
Community**



**Mafrag
Bridge**



**Yas Island
Villas**



**Bright Riders School, MBZ
city**



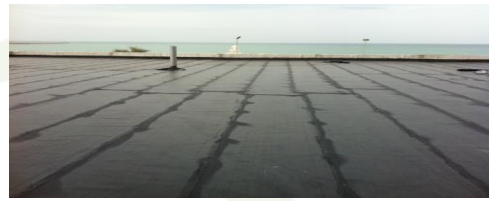
**Abu Dhabi Indian school , Al
Wathba**



FIVE DIMENSIONS OUR PROJECTS



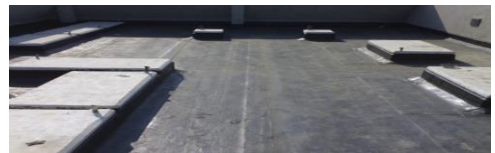
50 villas Khalifa A



Mirfa hotel



54 Villas khalifa A



Mafrq Al Jaber labor camp



CONTACT & LOCATION

Address

Fatima Alfalahi Build. M2,
Electra Street,
Abu Dhabi UAE.

P.O. Box : 39645 , Abu Dhabi UAE.

Tel / Fax : +971 2 6325622

Mobile : +971 50 3159006

Email : info@fivedimensions.ae /
fivedimensions@hotmail.com

Lebanon Office

Takkoush Build,
Hamra, Ras Beirut,
Lebanon.

Tel : +961 71 304128